

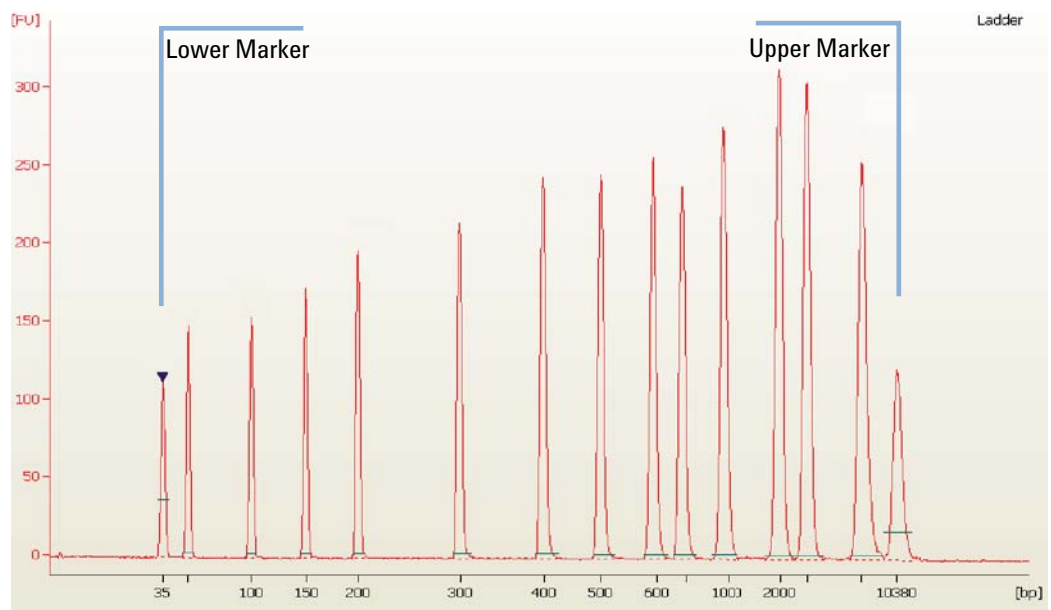


Agilent High Sensitivity DNA

## Checking Your Agilent High Sensitivity DNA Assay Results

### High Sensitivity DNA Ladder Well Results

To check the results of your run, select the Gel or Electropherogram tab in the **Data** context. The electropherogram of the ladder well window should resemble to those shown below.



**Figure 1** High Sensitivity DNA ladder



## 6 Checking Your Agilent High Sensitivity DNA Assay Results

### High Sensitivity DNA Sample Well Results

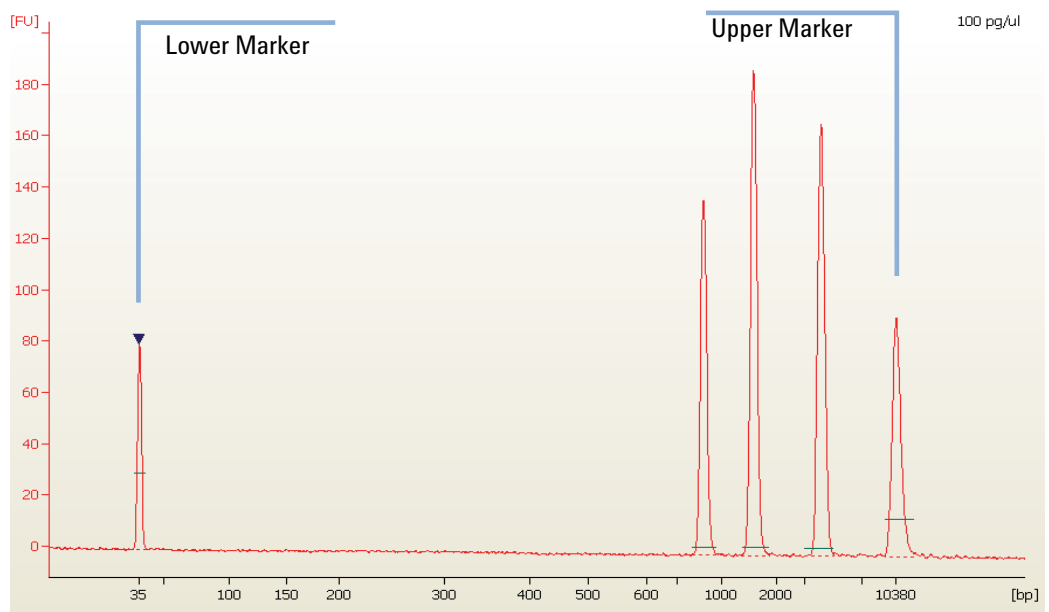
Major features of a successful ladder run are:

- 15 peaks for High Sensitivity DNA ladder (including markers)
- All peaks are well resolved
- Flat baseline
- Correct identification of both markers

If the electropherogram of the ladder well window does not resemble the one shown above, refer to the *2100 Expert Maintenance and Troubleshooting Guide* for assistance.

## High Sensitivity DNA Sample Well Results

To review the results of a specific sample, select the sample name in the tree view and highlight the *Results* sub-tab. The electropherogram of the sample well window should resemble the one shown here.



**Figure 2** DNA peaks of a successful sample run

Major features for a successful High Sensitivity DNA sample run are:

- All sample peaks appear between the lower and upper marker peaks. If some sample peaks are outside the marker bracket, adjust the upper or lower marker. Please refer to the *2100 Expert User's Guide* or *Online Help* for details.
- Flat baseline
- Baseline readings at least 5 fluorescence units (see Zero Baseline in the User's guide or Online Help for details of how to see the baseline readings).
- Marker readings at least 3 fluorescence units higher than baseline readings.
- Both marker peaks well resolved from sample peaks (depends on sample).